



**Friends of Archer Park Station & Steam Tram Museum Inc**

URL: [QldRailHeritage.com/ArcherPark](http://QldRailHeritage.com/ArcherPark)

PO Box 573, Rockhampton, Qld 4700 Australia

Ph: 07 4922 2774 Fax: 07 4927 0120 E-mail: [archerpark@bigpond.com](mailto:archerpark@bigpond.com)

Volume 8 Number 2, **April 2014**

# TRAM TRACKS

## Date Claimers

**Annual membership: \$10 now due**

31 March – Friends' Membership deadline

7 April – School Holiday Activities

14 April – School Holiday Activities

27 April – Family Fun Day

30 April – Annual General Meeting

29 June – Family Fun Day

24 August – Family Fun Day

26 October – Family Fun Day

## Friends of Archer Park Executive

President:

Vice President: Bob Rallings

Treasurer: Ross Carter 0407 038 065

Secretary: Phil Augustine 0429 094377

Meetings of the **Friends of Archer Park** are normally on the fourth Wednesday of the month in the refreshment room, but the **next meeting is 12:30 pm, 30 April 2014 (AGM)**.

## Friends' Matters

This is an exciting time for us as the day draws near when the Friends Association will take over management and operation of the museum for the Rockhampton Regional Council.

Over the last few months the Executive Committee has had many meetings with Council officers to determine acceptable conditions – agreement was reached a couple of weeks ago. The Council has approved the proposal that Friends take on the management and a contract is being drawn up.

Briefly put the conditions are:

- Council, as "Owner" of the museum and most of its exhibits and equipment, will retain responsibility for maintenance and will

provide specialist support if necessary, eg safety and mechanical.

- Friends will be responsible for all running costs such as wages, services, fuel, etc. To fund these Friends will receive a management fee from Council and will retain all income from the museum's operation.

Friends will take over management of the museum from about 1 April 2014 but responsibility for operating the rollingstock will be delayed until we can finalise our accreditation with the Transport Department's Rail Safety Regulator.

From the excellent roll up at the last two monthly meetings it is clear that our members are keen to become involved in the process and support the running of the museum for the benefit of the community. Future meetings will certainly include much on management issues for the museum to give members a knowledge of what is happening and seek their contributions.

Alas, our President Alex resigned from his position on the Executive Committee at the end of February monthly meeting. Fortunately Alex intends to continue to support us as a Friend and volunteer.

It is now a good time for a reminder that the financial year for Friends Association ends on 31 March 2014. From that time membership subscriptions for the year 2014/15 are due. This subscription remains unchanged at \$10 per person. We hope you will all continue to support the museum and, if possible, recruit more folk to be volunteers and members.

Another reminder is that the Annual General Meeting for the Friends Association will be held on Wednesday, 30 April 2014. The agenda for this meeting will include

- Annual Report from the Executive

- Audited annual financial report
- Election of Executive Officers: President, Vice President, Treasurer, Secretary
- Appointment of Auditor

Nominations are sought from financial members to fill the Executive positions. Nomination and Proxy vote forms are available from the office. Written nominations should reach the Secretary by 16 April 2014.

We would encourage all members and others who may be interested in supporting the museum to attend the Annual General Meeting.

### **Operating Name**

You may notice a change in our operating name. Our Association name will not change from Friends of Archer Park Station and Steam Tram Museum Inc, but we have decided to operate under a shortened trading name "Archer Park Rail Museum". This trading name has now been registered.

### **Activities**

At the February monthly meeting Friends decided that we should trial School Holiday activities as we had last year on Mondays 7 and 14 April 2014. Two volunteers have stepped forward to operate the tram and others to operate the kitchen on those days, but we need ideas and arrangements for other activities to amuse the children on those days.

Our first Family Fun Day for the year is scheduled for Sunday, 27 April 2014. We need help in arranging stalls and attractions for the public on that day and, of course, many volunteers to operate the museum.

On 26 February the Legacy ladies held their first meeting for the year at the museum. We appreciate the roll up of volunteers to help with the catering of this function and the assistance of Dennis Sheehan who has a Food Handling certification.

### **Promotion and Advertising**

One of the challenges managing the museum is to effectively promote what we have on offer. Initially Ross Carter and Lynn Zelmer have prepared flyers to publicise our School Activity days and Family Fun Day. These flyers are now available in the office and we seek help in widely distributing them around the region.

In addition, they have devised a promotional survey to collect names and e-mail addresses of people or organisation's to whom we can forward promotional information electronically.

Any more ideas we gain from members to encourage the community to visit the museum will be much appreciated.

### **Around the Museum**

Although we didn't have a lot of rain we had a major growth of grass and weeds to clear to start operation on the track. RRC Parks and Gardens did a great job in February to clear and poison the track for us. Unfortunately it's all growing again!

Another major help from RRC Works group was the clean out of the major drain at the south end which has been overflowing onto track whenever it rains.

We had further support in having our electrical equipment tested and tagged – by staff from the Pilbeam Theatre's Venues and Events crew.

Meetings are scheduled shortly with RRC Infrastructure Managers to review maintenance requirements on the station itself.

### **Training**

Another issue which has showed up is training for our members and volunteers in the various aspects of operating the museum. Initially we need to develop an Induction Course relative to our site based on previous RRC guidelines which will satisfy accreditation needs. This can probably be done in-house by members.

One continuing problem is the training and accreditation of people to operate the rollingstock, particularly the tram. ATQR contacts advise that they have a training organisation willing to train in steam operation – for a cost – so hopefully we can see some benefits from that in the near future. Again, training in our local operations will be done by members in-house.

In conclusion, we are well on the way to a busy and satisfying year at Archer Park Rail Museum and we look forward to your continued support to build on what we already have.

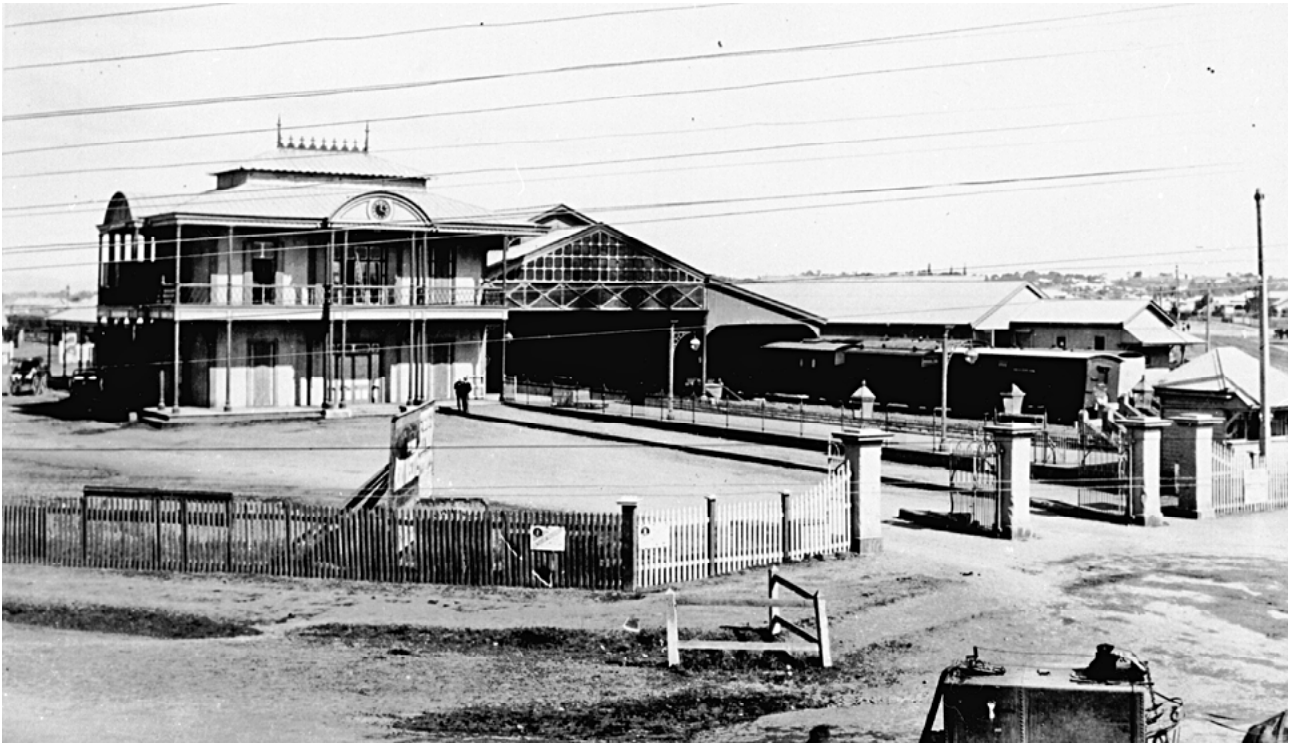
### **Historical Information Available**

This is a reminder that the Friends' web site contains a wide variety of photographs, journal articles, clippings and other resource materials

for understanding the history of Archer Park and rail operations in Central Queensland.

Friends' member, Alex Limkin recently provided a selection of QR-related photos that

will gradually be added to the web site. Who took the photos below is unknown, and caption information is limited, but the two photos below come from Alex's Collection.



Rockhampton Railway Station (Stanley Street) and Gates, c 1900. Note the station is on the opposite side of the tracks to the current station. Photo from Alex Limkin Collection.



Rockhampton Railway Station (Stanley Street) and Stores Building... with what may be the Post Office tower in the background, likely in the same era as the photo from the opposite end above. Photo from Alex Limkin Collection.