



Friends of Archer Park Station & Steam Tram Museum Inc

URL: QldRailHeritage.com/ArcherPark

PO Box 573, Rockhampton, Qld 4700 Australia

Ph: 07 4922 2774 Fax: 07 4927 0120 E-mail: archerpark@rrc.qld.gov.au

Volume 4 Number 6, **December 2010**

TRAM TRACKS

Date Claimers

Archer Park will not be open Sundays during January 2011. This is our quietest month for visitors and the Tram will not be operating.

Archer Park Coordinator will be on annual leave 24 December to 27 January

8 March 2011: Bush Poets, BBQ & Song Night

Vale Gordon James Leach

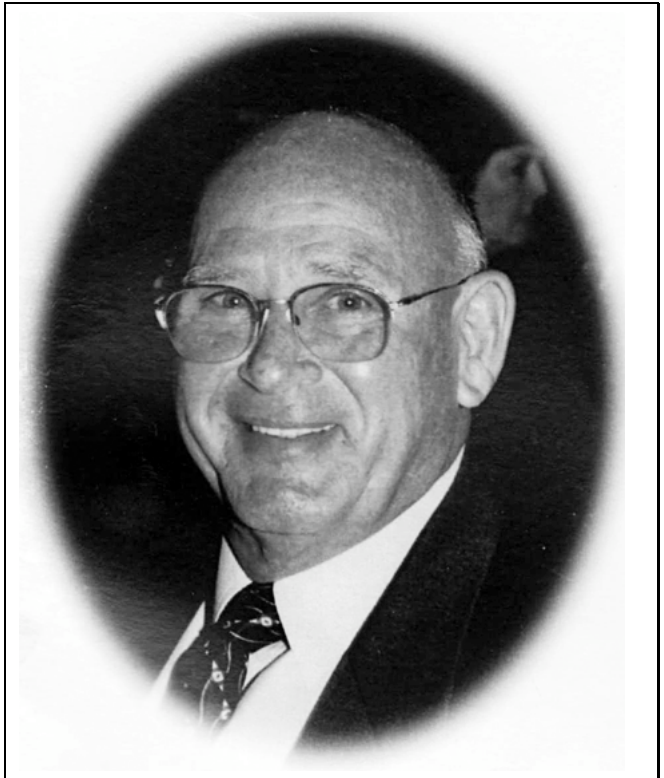
The Friends of Archer Park Station and Steam Tram Museum are mourning the passing of their member, Gordon Leech, affectionately known as Digger. With his passing it can be said that he takes with him a considerable amount of rail knowledge, much more than many people will ever know.

Gordon was born in Rockhampton and went to school in Emerald. At the age of 14 years he started his job as Lad Porter in the railway, relieving Station Mistresses and Night Officers around the district. He later became a Shunter and progressed on to Guard. At the time of his classification to Guard he was the youngest Guard in the Queensland Railway system.

He worked in Alpha, Barcaldine, Charleville, Charters Towers, Emerald and Gladstone depots. He also worked in Rockhampton as a Group Instructor training people to become guards and also training Drivers Assistants to do Guards duties when Guards were being taken off trains. He also did Basic Electrification Safety, Trackside Safety, Flagmen, Isolation Protection and Dangerous Goods training.

The name Digger came about from a Platform Foreman who called everyone by that name when he wanted them to do a job and the name stuck to Gordon.

Gordon was always cheerful and kind to people he came in contact with and will be greatly missed on Carriage Shade Capers Sundays at Archer Park.



8 June 1936 — 23 September 2010, Aged 74 years

Rest In Peace

Notes from the President

The Christmas luncheon is on Sunday 5 December at 12 noon. Ladies from a 'Cancer Walk for Life' team are catering for us so we can all enjoy the afternoon. The luncheon will consist of nibblies, appetizers, meat and salads main course and delicious sweets. Soft drinks will be provided but alcohol is BYO. Volunteers who are working on the day are asked to sign off at noon. Instead of having a 'Secret Santa', we will set up a Christmas tree where anyone can place non-perishable gifts for distribution to the Salvation Army. The cost is \$8 for members and \$15 for non-members.

Although the 'Friends of the Gardens' social day on 17 October and the social croquet on 9 November numbers were down on expectations, we thoroughly enjoyed ourselves and look

forward to doing it all again in the New Year. The 'Friends of the Gardens' have offered to take us on a tour of the Botanic Gardens next time whereas we are looking forward to more regular participation in the social croquet.

The final 'Carriage Shade Capers Day' for this year was held on 31 October and attendance was up 83% on the corresponding day last year. Next year we should have a brand new, eye-catching banner that conforms to our marketing image for future 'Family Fun Day' events. The 'Halloween' theme worked quite well and many thanks go to the Heritage Village for organizing the props. Thanks also go to the Guides and Scouts for their participation and we look forward to having them again. The damper was excellent.

The Melbourne Cup luncheon was again a successful event for 'The Friends'. This is the only event that is organized and run by us each year so congratulations and thanks go to all the volunteers, especially Dot and Wilma, who work so hard to make it worthwhile.

I would like to take this opportunity to wish everyone 'All the Best' for the festive season, particularly good health. May you all share great times or memories with loved ones and friends and spare a thought for those less fortunate than ourselves. I will leave you with the following quote from Fred Hollows:

'To my mind, having a care and concern for others is the highest of the human qualities'.

Merv Edmonston

Volunteer Activities

Phil and Merv took a Heritage Village truck to Bowen early November and picked up a load of coke for the tram donated by the manager of Xstrata, Bruce Cole. Bowen Coke Works have been supplying Archer Park with coke for ten years, Dennis emailed our appreciation for the donation to Bruce.

A volunteer was hurt at the museum injuring his shoulder on rail line after falling from a three rung step ladder. We wish Jacko a speedy recovery.

Another volunteer has been injured, but not at the museum, after being bitten by a spider. We wish Lyn a speedy recovery from this ordeal.

Archer Park has gained two new volunteers, Jim and Glen are being shown around the museum

by other volunteers, we hope they will enjoy their stay with us and working as one of the team.

Notes from the Coordinator

Plumbers have been on the Carriage Shade plugging up holes so rain won't come in. The curvature of the roof required a cherry picker to hoist the plumbers onto the roof.

A very big thank you to the many stall holders and exhibitors who have assisted with Carriage Shade Capers over the year.

The Melbourne Cup Luncheon was attended by twenty eight people and a good time was had by all. A big thank you to Dot & Wilma and the other ladies who helped out.

Diesel Electric Loco 1614 is again operating with the donated batteries from Redbank but other problems surfaced. A control unit blew out and was replaced, but another unit also blew out. The process of elimination to get all components working again continues.

Day Book: Council has asked me to organise a Day Book for all volunteer tasks to cover volunteers in case of an accident. Work to be done would be written up at the beginning of a day and before a new job is started. This is a 'heads up' as I will be having further discussions with Council's WPHS person before the Day Book is commenced.

I would urge all volunteers to have patience and understanding while volunteering, as procedures and policies are getting more complicated and the book work is getting heavier. Many policies, procedures and rules from Council do affect the volunteer.

Year End: We are nearly at the end of 2010 and I would like to take this opportunity to wish all volunteers a Merry Christmas and a Happy New Year from the Rockhampton Regional Council and myself as their representative and Operations Coordinator of Archer Park.

A big thank you to all volunteers who put in 1010% effort not only during 2010 but all the time and for keeping the museum operating.

I can't thank you all enough, especially as it has been a difficult year for some of us with family problems and injuries.

Dennis Sheehan

House Keeping (for action please)

Volunteers must record their times in the sign-in book, especially when coming and going during their rostered activities. This is required both for insurance purposes and to be aware of where volunteers are when needed.

Council has a zero tolerance policy for Council workers, including volunteers, when they are on duty and/or when members of the public are present. Melbourne Cup Day is the only exception to the rules, being deemed a special day when alcohol may be consumed in moderation—and keeping in mind the dangers of drinking and driving or operating machinery.

At no other time while the museum is open to the public, or a volunteer has signed the time sheet, is alcohol consumption permitted. This means volunteers must sign off the time sheet if they participate in bush poet, birthday or other functions. The public may consume alcohol at such functions if they bring it themselves or are served by Archer Park staff (volunteers or Council), but not the volunteers if they are on duty.

I cannot urge enough to our volunteers to take more care and think before they tackle any jobs around the museum. We have had three incidents in the last month and we don't need anymore. Please also advise your volunteer mates if you see they are about to do something which could cause an accident or injury.

I hope 2011 will be a good year and we will see plenty of visitors through the museum, and that everyone stays healthy.

A big thank you again, Friends of Archer Park.

Dennis Sheehan

Regional Rail Heritage Meeting

A small group of delegates from Mt Morgan, Emu Park, Australian Sugar Cane Railway (Bundaberg), and the host group, Bundaberg Railway Historical Society, met 2 October.

This group meets several times each year to become more familiar with the rail heritage activities in the CQ region and to discuss issues of common interest. The day included congratulations to BRHS President, Graham Cossart, for receiving the 2010 Chuff award (ATRQ), reports from those attending, with updates from both Bundaberg groups and Mt Morgan, and a train ride around the Botanic Gardens. Thanks

to BRHS for hosting the day and to ASCR for lunch and the train ride.

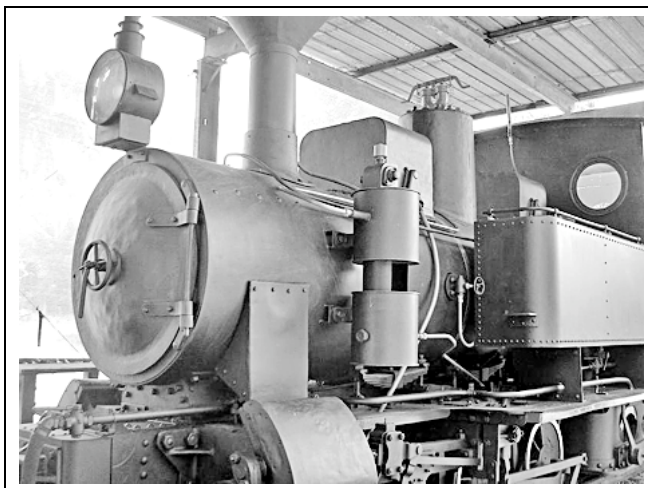


Graham Cossart and Bundaberg Mayor Lorraine Pyefinch with the Chuff Award, September 2010.
BRHS photo

Buderim-Palmwoods Heritage Tramway

BPHTI has recently published a written and photographic history of the tramway co-authored by Garth Fraser and Neil McGarvie.

The book provides a short history of the tramway itself, the development of the Heritage Walking Track along the old tramway and the cosmetic restoration of one of the tramway's original locomotives.



Detail of some of the cosmetic restoration work on the Buderim-Palmwoods Krauss. BPHTI photo

Further information can be found on the Society's web page:

<http://QldRailHeritage.com/Buderim/>

Enjoying the Season

Enjoy the upcoming Christmas and New Year functions but remember to drink responsibly and drive safely

With very best wishes for Christmas and a happy, healthy and productive New Year

Lynn Zelmer



Some of the members of 'Friends of the Gardens' visiting Archer Park (left, Lynn Zelmer photo) and the return visit to the Kershaw Gardens (right, Ann McHugh photo), both 10 October 2010.



Shay locomotive loaded at The Workshops Rail Museum earlier this year, ready to depart for the Nambour Museum where it will be on static display. This 2' gauge locomotive worked on the Mapleton Tramway and then Moreton Mill's sugar cane tramway, and was on display at the mill for many years before the mill was closed. David Mewes photo

Next page: A selection of photos from the last Carriage Shade Capers of 2010, with a Halloween theme. And it looks like at least one passenger spent a long time waiting for the train to arrive!

Our sincere thanks to everyone involved, including the visiting public, for making this and other Carriage Shade Capers a success during the year. Lynn Zelmer photos

Carriage Shade Capers — 31 October 2010

